



# HELPING COMMUNITIES HELP THEMSELVES



INDIANA RURAL DEVELOPMENT  
COUNCIL, INC.

WORK PLAN  
2007-2010

ADOPTED 10/04/07

The Indiana Rural Development Council was established in 1993, as a unique organization bringing together partners from business, non-profit organizations, federal, state, and local governments. This partnership valued communication, coordination, collaboration, and trust in an effort to maximize resources and assistance to rural communities throughout Indiana.

Through the years, IRDC has evolved as an organization, but its values and mission have remained consistent. Now as an independent, non-profit organization, no longer housed in state government, IRDC will continue to convene, facilitate, and serve as a clearinghouse to help rural communities in need.

The following report articulates IRDC's Work Plan for the next 18-36 months. It is a continuation of the strategic planning efforts begun at the 2006 IRDC Leadership Retreat. The Work Plan will help IRDC, Inc. achieve the following goals:

- serve as the rural voice in Indiana
- make RISE 2020 real and relevant
- build a membership organization
- provide leadership first, and management second on critical issues facing rural Indiana
- build on the power of partnerships
- pursue projects that generate tangible results

This plan is a portfolio of projects and activities that the Council will pursue in partnership with government, businesses, non-profit organizations, and academic institutions. The Council recognizes that it will work with different partners on individual components of this portfolio. This is the spirit of the partnership that has been a part of IRDC since its founding.

The work plan will be used to guide the activities of the Council and to secure future funding.

At its August 9, 2007 meeting, the Board of Directors reviewed and adopted revisions to the organization's mission, purpose and core objectives. The new language is:

### Mission

The Indiana Rural Development Council is a private-public partnership that advocates for the vitality of rural Indiana.

### Purpose

The Indiana Rural Development Council's purpose is to be a catalyst and assist members, partners and other stakeholders in meeting the economic and social needs of rural Indiana by cultivating and initiating innovative ideas with rural communities to be great places to live, learn, work, and play.

### Core Objectives

The Indiana Rural Development Council serves members, partners, and other stakeholders by working to:

- **Convene** – *Providing safe, neutral forums to address rural issues;*
- **Converse** – *Seeking community input to identify problems and opportunities;*
- **Collaborate** – *Creating partnerships to find solutions, connecting partners to take action, and educating the public on rural issues; and*
- **Celebrate** – *Helping communities instill pride by commemorating their heritage, recognizing their accomplishments, and planning for their future.*

# Service Groups

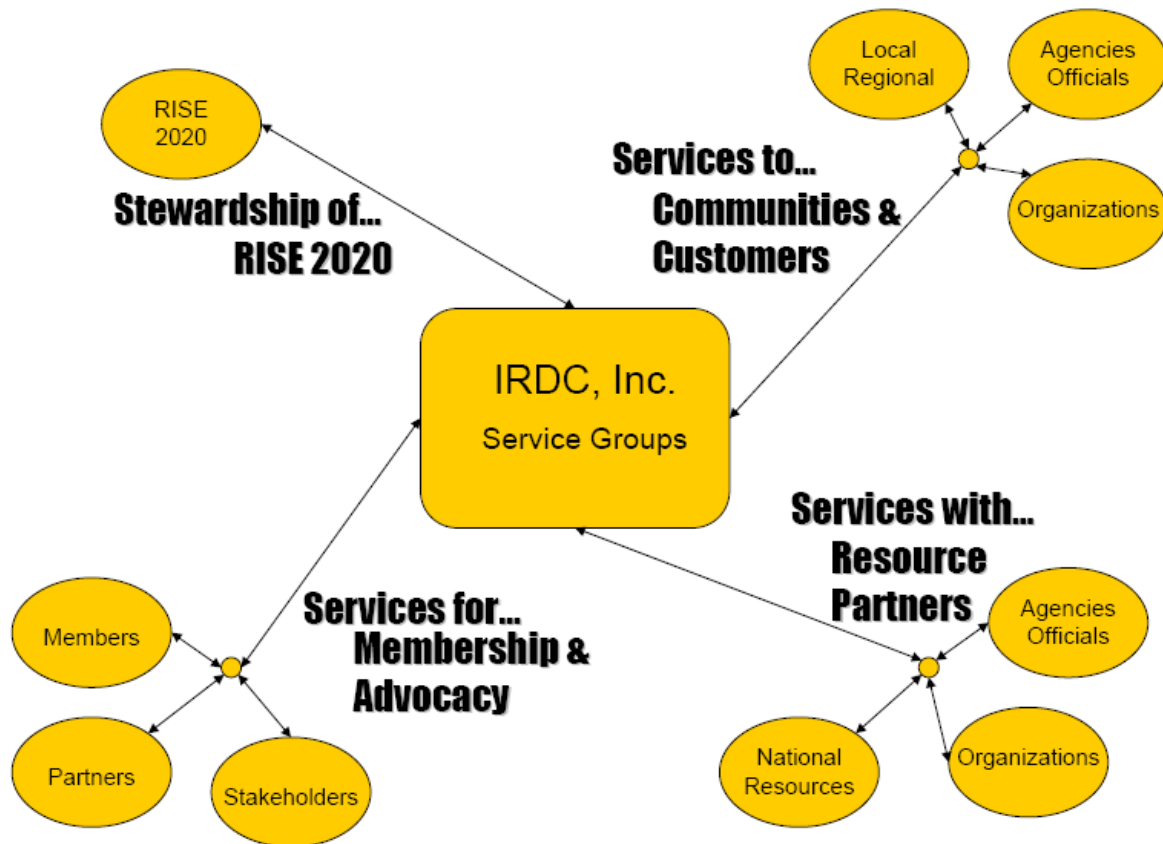
Two key questions initiated the planning discussions. First, "Who does IRDC engage?" Second, "How does IRDC engage them?" The Planning Group identified four key audiences as service groups and the way in which IRDC will engage them.

How Do We Engage  
IRDC will provide:

Who Do We Engage (Service Group)

Services for...  
Services to...  
Services with...  
Stewardship of...

Membership and Advocacy  
Communities and Customers  
Resource Partners  
RISE 2020



# MEMBERSHIP AND ADVOCACY SERVICE GROUP

## *Priority Projects*

- *Dues Structure*
- *Membership Benefits*
- *Membership Events*

## **Membership and Advocacy Principles**

- Create networking opportunities for rural citizens and leaders between themselves and with service/resource providers
- Provide a rural voice on issues and policy decisions that impact rural communities and their role in regional frameworks
- Create an emotional investment in the future of rural Indiana through participation in and support of IRDC, Inc.
- Provide financial resources to IRDC, Inc. for grant match requirements and other basic organizational needs
- Establish a value proposition for individuals and entities willing to financially invest in IRDC, Inc.

### **1. Dues structure**

#### *Purpose:*

Create a dues structure to encourage entities and individuals to invest in the services and programs of IRDC, Inc., the voice of rural Indiana. The investment creates a financial and emotional connection between the individual/company/organization and IRDC, Inc.

#### *Description of Product or Service:*

- A membership structure will include:
  - Giving levels for entities and individuals
  - Names for each level of investment
    - \$50 – Individuals
    - \$250 – Government (local, state, federal), Non-profit organizations, Academic Institutions
    - Corporate Business
      - \$250 Investor
      - \$500 Patron
      - \$1,000 Benefactor

- In order to cover current operational expenses, IRDC needs to generate \$20,000-\$25,000 per month
  - The Membership and Advocacy Service Group believes that \$50,000 annually from dues investments is very optimistic and is a level that can be worked towards, not achieved in the first several years (\$40,000 = 16%)
  - Grants from foundations, agencies and other sources will need to be obtained to cover remaining operational expenses and project needs (84%)

## 2. Membership Benefits

### *Purpose:*

Identify and develop members-only benefits that create value for investments in IRDC, Inc.

### *Description of Product or Service:*

Members-only benefits could include:

- Access to key publications and projects, such as,
  - Booklet to start a Rural Neighborhood Crime Watch Program
  - Live a Dream, Own a Home (SIRDP project)
  - Partnership for Prescription Assistance
  - IRDC Community Assistance Task Forces
- Newsletters, reports, Grant Station subscription
- Access to and participation in on-line rural polls and surveys

## 3. Membership Events

### *Purpose:*

Membership in IRDC will provide preferential access to key events supporting IRDC and rural Indiana.

### *Description of Product or Service:*

Key events may include:

- Statewide events hosted by IRDC
  - Showcase rural communities and their successful efforts
  - Networking opportunities for community leaders to share ideas with each other

- Networking opportunities for community leaders and resource providers
- Regional events hosted by IRDC

Key responsibilities for members shall include:

- Electing the IRDC president-elect, service group chairs, and at-large directors at the association's annual business meeting
- Determining rural policies to be pursued jointly with IRDC's partner groups

# COMMUNITIES AND CUSTOMERS SERVICE GROUP

## ***Priority Projects***

- *Community Assistance Task Forces*
- *Community Visitation*
- *RISE 2020 Rural Community Guidebook*
- *Community Profile*
- *Rural Ideas That Work Initiative*
- *Client Services*

## **Communities and Customers Principles**

- Recognize that the community's most valuable assets are its people, their ideas and their energy.
- Local and regional leaders must cultivate the skills to convene, converse, collaborate and celebrate resulting in sustainable and prosperous communities.
- The responsibility of IRDC and its partners is to help communities help themselves.

### **1. Community Assistance Task Forces**

#### *Purpose:*

The IRDC Community Assistance Task Forces convene key resource providers and regulatory decision-makers to provide a forum for communities and regions seeking assistance or resolution of a problem. Task Forces should utilize the RISE 2020 framework to seek innovative ideas and collaborative solutions.

#### *Description of Product or Service:*

- IRDC Community Assistance Task Forces should be organized around specific interest areas, including but not limited to:
  - Infrastructure: EIWG – Environmental Infrastructure Working Group – water and wastewater treatment needs
  - Housing: IHART – Indiana Housing Assistance Review Team
  - Broadband and Technology
  - Entrepreneurship, Business Development, and Workforce
  - Healthcare

- Transportation
  - Tourism, Arts, Culture, and Heritage
- Task Forces would meet for presentations from communities and other groups seeking feedback, and technical and financial assistance.

## 2. Community Visitation

### *Purpose:*

The Community Visitation Program is designed to assist rural communities and regions in recognizing their assets, identifying issues of concern, and developing potential options for addressing these issues. After this initial step in the community development process, typically a one-day visit, the program will provide a report to the local leaders and connect the community to resource partners to pursue solutions. Community Visitation (CV) teams will utilize the RISE 2020 framework to maximize local efforts.

### *Description of Product or Service:*

A Community Visitation Team of resource specialists will:

- Use the *RISE 2020 Rural Community Guidebook* with communities seeking a formal visitation.
- Engage three communities to model RISE 2020 in concert with a community's development efforts. Steps include:
  - Identifying a team of local champions which is paramount in conducting a community visitation effort
  - Learning and using the RISE 2020 framework to aid in planning
  - Creating and maximizing a community plan
  - Facilitating other steps specific to the community's starting point
  - Connecting communities to the broad menu of services offered by Resource Partners

## 3. RISE 2020 Rural Community Guidebook

### *Purpose:*

The RISE 2020 Rural Community Guidebook is a "how-to" resource that introduces RISE 2020 and helps communities and regions use the framework to maximize their assets and opportunities, and achieve their goals.

*Description of Product or Service:*

- The RISE 2020 Community Guidebook is a hardcopy and online resource guide to help communities and regions. It should include:
  - Overview of Rural Communities in Indiana
  - Introduction of RISE 2020
    - Foundation
    - Seven Pillars
    - Key Questions to Explore Possibilities
  - “Helping Communities Help Themselves”
    - Step-by-step guide using RISE 2020 in community development focusing on three starting points
      - Where do we begin?
      - Can you help us with our problem?
      - How do we maximize our opportunities?
  - Online Resources, including explanations and access
    - *Rural Ideas That Work*
      - Successful practices website
      - Resource Partners Directory
      - Electronic calendar
    - Community Profile
    - Community Assistance Task Forces

#### **4. Community Profile**

*Purpose:*

Provide a statistical and graphic profile of a municipality or county to assist local officials and leaders with successful community development efforts.

*Description of Product or Service:*

A community profile will be:

- Created and maintained on a website to make it widely accessible and easy to update
- Developed from existing data using US Census information and other sector specific collections
- Generated into easy to read charts, tables, and graphics to communicate the information easily and with clarity
- Categorized with information from the following areas:
  - Cultural amenities
  - Economic

- Education
- Employment
- Financial resources
- Governmental structures
- Health and Wellness
- Homeownership
- Income
- Infrastructure
- Location
- Natural amenities
- Philanthropy
- Population
- Public safety
- Youth engagement

## **5. Rural Ideas That Work Initiative**

### *Purpose:*

The *Rural Ideas That Work* Initiative will develop and maintain an information exchange that showcases successful practices and projects and provides access to resource partners, their programs and services. This information will enable community leaders and service providers to share “ideas that work” in rural communities and regions. The goal is to provide leaders with ideas that can be adapted to address local needs and opportunities.

### *Description of Product or Service:*

- The *Rural Ideas That Work* Initiative will include:
  - Best practices website
    - Provides a peer-to-peer learning opportunity for rural communities built on the needs identified by the RISE 2020 network
    - Housed and maintained by IRDC
    - Successful practices posted by resource partners
    - Ideas from Indiana, U.S. and international rural communities
    - Links to other best practices sites
    - Provide an opportunity for a collaborative team of college students to identify successful practices from rural communities and regions to populate the site
  - Access to Resource Partners

- Publish and update an on-line Resource Directory
  - List of resource providers with key programs and services
  - Contact information or links for each provider
- Create and maintain an Electronic Calendar of upcoming events
  - Password access to partners so they can post their events
  - Web links from postings to events

## **6. Client Services**

### *Purpose:*

Provide fee-based services to partner groups, agencies, and others to help them convene, converse and collaborate around agreed upon objectives.

### *Description of Product or Service:*

- Determined by the contracting agency, partner organization, or other group
  - Perform on a project-by-project basis
  - Consistent with IRDC Mission and Purpose
  - Generate sufficient return on investment
  - Leverage staff and leadership capacity

# RESOURCE PARTNERS SERVICE GROUP

## *Priority Projects*

- *Resource Partners Network*
- *Strategic Alliances*
- *Rural Research Consortium*
- *Rural Policy and Advocacy*

## **Resource Partners Principles**

- IRDC, Inc., a collaborative organization, is positioned to provide strategic leadership and advocacy for Indiana rural matters.
- Strategic leadership and advocacy is best advanced by locating, connecting and leveraging rural Indiana resource partner relationships between:
  - Individual–individual
  - Resource provider–resource provider
  - Resource provider–community/region
- Strengthening the communication, coordination and collaboration within the network of resource partners will enhance service delivery to Indiana rural communities and regions by all.

## **1. Resource Partners Network**

### *Purpose:*

Strengthen the communication, coordination and collaboration between and among the network of resource partners who serve rural Indiana interests.

### *Description of Product or Service:*

To strengthen the resource partners' network, IRDC will:

- Provide Partner Services Exchange and Training
  - Educate potential resource partners about RISE 2020, IRDC, and its functions
  - Facilitate the mutual resource partners exchange of information about products and services

- Facilitate training opportunities for resource partners to improve convening and facilitation skills
- Identify, coordinate, and train a team of facilitators/conveners to be used by communities and regions for the purpose of addressing general or specific needs related to the furtherance of RISE 2020
- Encourage the expansion and utilization of resource tools to support the work of resource partners, i.e. resource directory, electronic exchanges, guidebook, etc.

## **2. Strategic Alliances**

### *Purpose:*

Establish, nurture and encourage strategic alliances among and between resource partners to enhance service delivery and advance initiatives that benefit rural communities and regions.

### *Description of Product or Service:*

Generate Strategic Alliances to address key rural issues

- Convene appropriate resource partners, service providers, and others for Community Assistance Task Forces such as EIWG, IHART
- Convene appropriate resource partners, service providers, and others for Community Visitation teams, RISE 2020 Pillar Teams, and others
- Facilitate and encourage joint conferences, meetings and other events to leverage resources, exchange information, and pursue strategic action.

## **3. Rural Research Consortium**

### *Purpose:*

Coordinate rural community research efforts for the purpose of acquiring in-depth data and information that will advance rural communities in Indiana.

### *Description of Product or Service:*

The Rural Research Consortium will:

- Assemble college and university researchers, along with key practitioner groups and stakeholders, to ensure that existing data are leveraged while pursuing new data

- Share rural relevant research between academic institutions and key resource partners to maximize the value of the information and create knowledge to improve rural Indiana
- Pursue and allocate funding to partner institutions for the purpose of maximizing research efforts designed to address existing and identify emerging rural issues, gather needed data to support policy and/or programmatic services.

#### 4. Rural Policy and Advocacy

*Purpose:*

Provide convening, conversing, and collaborating on key rural issues to identify policy needs, explore options, advocate for, and advance solutions that positively impact policy at local, state, and federal levels benefiting rural Indiana.

*Description of Product or Service:*

Support rural policy and advocacy efforts to:

- Coordinate dialogue of rural policy discussions
  - Convene partners, community leaders, and other stakeholders to discuss existing and emerging issues for the purpose of identifying policy needs to address these matters
- Provide strategic advocacy on key issues
  - Provide advocacy leadership on key policy initiatives that broadly serve rural constituents, communities, and regions, especially those issues without an identifiable champion within the resource partner network

# RISE 2020 SERVICE GROUP

## ***Priority Projects***

- *RISE 2020 Resource Specialists*
- *RISE 2020 Rural Community Guidebook*
- *RISE 2020 Marketing and Awareness*
- *RISE 2020 Foundation and Pillar Teams*
- *Rural Ideas That Work Initiative*
- *Indiana-HomeTown Competitiveness Pilot Project*
- *Top Ten Rural Priorities*

## **RISE 2020 Principles**

- RISE 2020: Rural Indiana Strategy for Excellence is a 15-year community development initiative with a framework built upon a Foundation and Seven Pillars.
- Communities and regions should use the RISE 2020 framework to leverage the connectivity of assets and resources across community sectors.
- RISE 2020 is an inclusive model that seeks to maximize the priorities and goals established by local and regional stakeholders.
- IRDC, Inc. serves as the organizational home and steward for the RISE 2020 initiative.

## **1. RISE 2020 Resource Specialists**

### *Purpose:*

RISE 2020 Resource Specialists will serve as facilitators and conveners to help community and regional leaders convene, converse, collaborate, and celebrate. Specialists will be assigned by need and will work with communities and regions to leverage common issues, assets, and opportunities. (reactive outreach)

### *Description of Product or Service:*

- The RISE 2020 Resource Specialists will:
  - Provide convening and facilitation services to communities, regions, partner organizations, and agencies

- Help communities and regions maximize their goals and priorities using the *RISE 2020 Rural Community Guidebook*
- Use IRDC as a referral hub for communities and regions needing resource specialists to provide facilitation and convening services, as well as planning services and technical assistance
- Provide an outside perspective and professional facilitation to communities and regions
- Convene multiple communities to address commonalities and pursue collaborative solutions
- Demand additional support services from IRDC that will require additional staffing

## 2. *RISE 2020 Rural Community Guidebook*

### *Purpose:*

The *RISE 2020 Rural Community Guidebook* is a “how-to” resource that introduces RISE 2020 and helps communities and regions use the framework to maximize their assets and opportunities, and achieve their goals.

### *Description of Product or Service:*

- The *RISE 2020 Rural Community Guidebook* is a hardcopy and online resource guide to help communities and regions. It should include:
  - Overview of Rural Communities in Indiana
  - Introduction of RISE 2020
    - Foundation
    - Seven Pillars
    - Key Questions to Explore Possibilities
  - “Helping Communities Help Themselves”
    - Step-by-step guide using RISE 2020 in community development focusing on three starting points
      - Where do we begin?
      - Can you help us with our problem?
      - How do we maximize our opportunities?
  - Online Resources, including explanations and access
    - *Rural Ideas That Work*
      - Successful practices website
      - Resource Partners Directory
      - Electronic calendar
    - Community Profile
    - Community Assistance Task Forces

### **3. RISE 2020 Marketing and Awareness**

*Purpose:*

Utilize a team of RISE 2020 leaders (speakers' bureau) to create greater awareness and understanding of the RISE 2020 framework within agencies, partner organizations, and universities. These same groups will be encouraged to utilize the framework in working with communities and regions as well as crosswalking issues with other interest groups. (proactive outreach)

*Description of Product or Service:*

RISE 2020 Marketing and Awareness team will:

- Present RISE 2020 to government agencies, universities, and partner organizations to deepen the understanding of the framework and identify ways to use it within their organizations. This should enable senior staff leaders and members to utilize RISE 2020 to help communities help themselves.
- Identify a list of primary and secondary target audiences for the RISE 2020 presentations.

### **4. RISE 2020 Foundation and Pillar Teams**

*Purpose:*

IRDC will convene citizens, leaders, and resource providers around the RISE 2020 Foundation and Pillars to holistically pursue regional and statewide opportunities and strengthen rural Indiana.

*Description of Product or Service:*

The RISE 2020 Foundation and Pillar Teams will:

- Provide statewide learning opportunities built around the RISE 2020 Foundation and Pillars
- Convene and connect key resource specialists on crosswalking issues
- Identify potential project(s) that can utilize RISE 2020 to strengthen rural communities, regions, or interest areas

### **5. Rural Ideas That Work Initiative**

*Purpose:*

The *Rural Ideas That Work* Initiative will develop and maintain an information exchange that showcases successful practices and projects and

provides access to resource partners, their programs and services. This information will enable community leaders and service providers to share “ideas that work” in rural communities and regions. The goal is to provide leaders with ideas that can be adapted to address local needs and opportunities.

*Description of Product or Service:*

- The *Rural Ideas That Work* Initiative will include:
  - Best practices website
    - Provides a peer-to-peer learning opportunity for rural communities built on the needs identified by the RISE 2020 network
    - Housed and maintained by IRDC
    - Successful practices posted by resource partners
    - Ideas from Indiana, U.S. and international rural communities
    - Links to other best practices sites
    - Provide an opportunity for a collaborative team of college students to identify successful practices from rural communities and regions to populate the site
  - Access to Resource Partners
    - Publish and update an on-line Resource Directory
      - List of resource providers with key programs and services
      - Contact information or links for each provider
    - Create and maintain an Electronic Calendar of upcoming events
      - Password access to partners so they can post their events
      - Web links from postings to events

## **6. Indiana-HomeTown Competitiveness Pilot Project**

*Purpose:*

The Indiana-HomeTown Competitiveness (I-HTC) pilot project uses a Nebraska-based model to focus on four of the seven pillars of RISE 2020. I-HTC is designed to help counties or regions focus on their assets and opportunities for community development.

*Description of Product or Service:*

- The I-HTC pilot project will:
  - Encourage communities to identify and pursue opportunities in the four RISE 2020 Pillars
    - Civic Leadership and Engagement

- Youth Engagement
- Rural Innovation Culture – Entrepreneurship
- Wealth Creation and Retention
- Select 6-12 communities to develop plans and implement tactics identified with assistance from the state resource team
- Provide a learning opportunity to adapt the Nebraska model to the broader, more holistic RISE 2020 framework
- Develop and enhance linkages between state resources and communities and regions
- Create the impetus to develop HTC-like tools for the other three RISE 2020 Pillars and the Foundation
  - Regional Frameworks
  - Asset-Based Community Development
  - Diversity, Access and Inclusiveness
  - Rural Constituency and Voice

## 7. Top Ten Rural Priorities

### *Purpose:*

Share the *Top Ten Rural Priorities*, developed at the RISE 2020 Congress, with legislators and policymakers to help them better understand the issues and opportunities facing their constituents in rural communities and regions.

### *Description of Product or Service:*

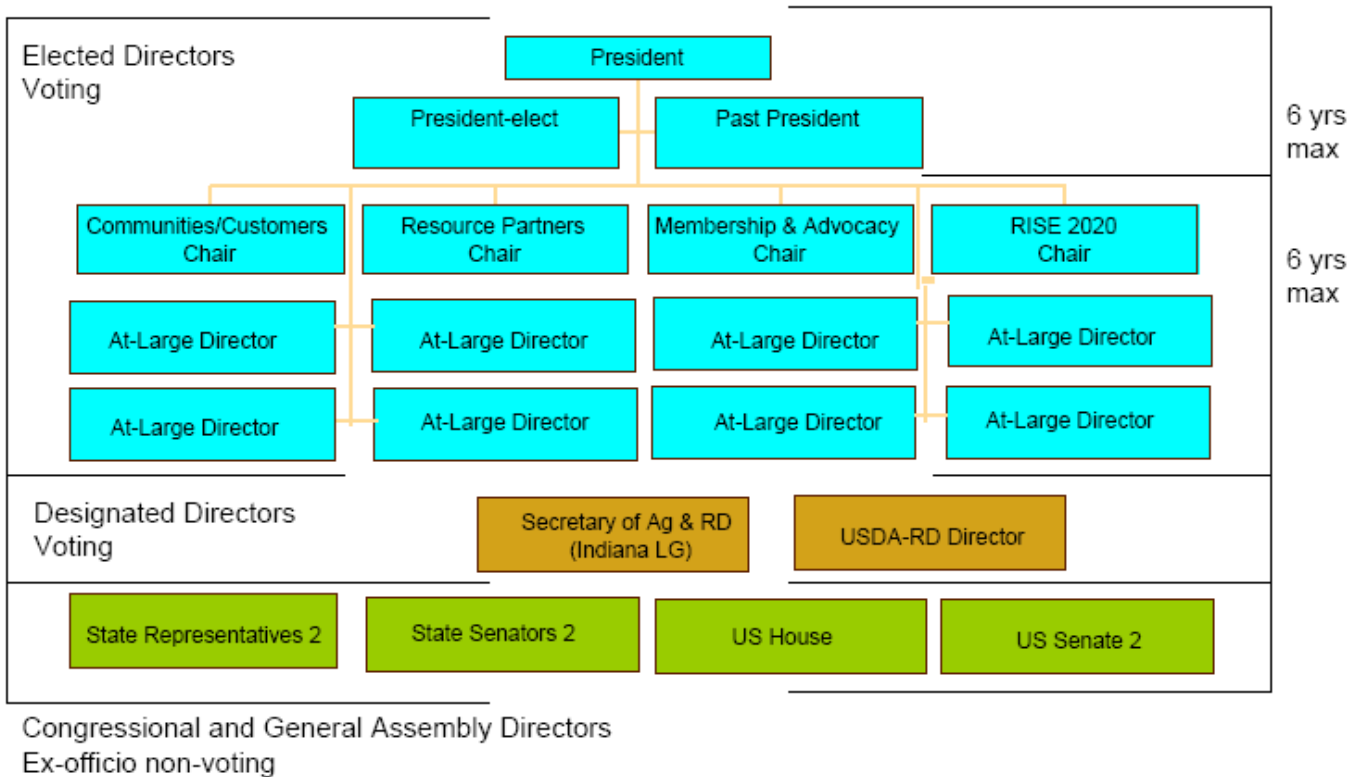
- The *Top Ten Rural Priorities* will:
  - Increase understanding of the crosswalking nature of rural issues and the direct and indirect impact of policy decisions
  - Increase awareness of the *RISE 2020 Rural Community Guidebook* and *Rural Ideas That Work* resource tools to help communities and regions identify issues, address problems, and pursue opportunities
  - Present an opportunity for rural legislators to formulate policies that positively impact Indiana's rural communities and regions.

# GOVERNANCE TASK FORCE

## IRDC, Inc. Board Reorganization Proposal

### Proposed Board with Term Limits

#### IRDC, Inc. Board of Directors



# GOVERNANCE TASK FORCE

## *Governance Principles*

- *Focus more leadership attention in Service Groups*
- *Engage Membership in Governance Responsibility*
- *Maintain the composition goals of the original NRDP/IRDC partnership*
- *Assign specific duties for the Board of Directors and Management Committee*
- *All directors are subject to IRDC's conflict of interest by-laws article*

## **1. Board of Directors' Composition**

- Elected directors (15)
- Designated directors
- Congressional and General Assembly directors
- Representative of:
  - Federal, state, local government
  - Non-profits
  - Business
  - Academia
  - Youth
  - Community Sectors

## **2. Board of Directors' Responsibilities**

- Governance Oversight
  - Inc.'s Legal Entity
  - Ratify Actions and Minutes of the Management Committee
  - Nominating Committee
- Rural Voice
- Program direction
  - Communities and Customers
  - Resource Partners
  - Membership and Advocacy
  - RISE 2020

### 3. IRDC, Inc. Officers

- Chief Elected Officers
  - Individual serves for a six-year period, serving as President-elect, President, and Past-President for two years in each position
  - President-elect does not have to come from the current board, but must have served previously on IRDC's board of directors
  - President-elect
    - Slated by the Nominating Committee
    - Elected by membership
- Secretary and Treasurer elected annually from within and by the board of directors

### 4. Service Group Chairs

- Four Board Directors will be elected as Service Group Chairs
  - Communities and Customers
  - Resource Partners
  - Membership and Advocacy
  - RISE 2020
- Elected by the membership
  - Serve three year staggered terms (maximum two terms)
  - Partial terms do not count against term limits
- Slated by the Nominating Committee
- *Transition – Appointed*

### 5. At-Large Directors

- Eight At-Large Directors
- Elected by the membership
  - Serve three year staggered terms (maximum two terms)
  - Partial terms do not count against term limits
- Slated by the Nominating Committee
- Election at 2007 Annual Meeting

### 6. Designated Directors

- Designated per by-laws
- Full voting privileges
- Currently:
  - USDA-RD State Director or designee
  - Indiana Secretary of Rural Development or designee

## 7. Congressional and General Assembly Directors

- Established per by-laws
- Ex-Officio Non-voting
- Currently:
  - State Representatives (2)
    - One Republican and One Democrat
  - State Senators (2)
    - One Republican and One Democrat
  - Congressional office representatives (4)
    - US Senators (2)
    - US House of representatives (2)

## 8. Management Committee (five members)

- Composition
  - President
  - President-elect
  - Secretary
  - Treasurer
  - 1 additional member from the IRDC Board of Directors, proposed by President, ratified by Board
- Responsibilities
  - Personnel
  - Legal
  - Financial
  - Facilities and Operations
  - Program implementation
  - Actions ratified by the Governing Board

## 9. Nominating Committee

- Past-President serves as the Committee Chair
  - *(Transition – chair appointed by president)*
- 2-4 additional board members serve on the committee
  - Committee members are recommended by President and ratified by the board
- Committee will select the slated candidate for each board and officer vacancy with additional nominations from the floor
- Representatives:

- Federal, state, local government, Non-profits, Business, Academia, Youth
- Community Sectors

#### **10. Governance Timeline**

- Service Groups continue to operate
- Approve New Structure
- Appoint Nominating Committee
- Amend IRDC By-Laws at November Board Meeting
- Board and Officer Election at the 2007 Annual Business Meeting (December 2007)
- New Board takes office January 1, 2008 with staggered terms

#### **11. Service Group Committees**

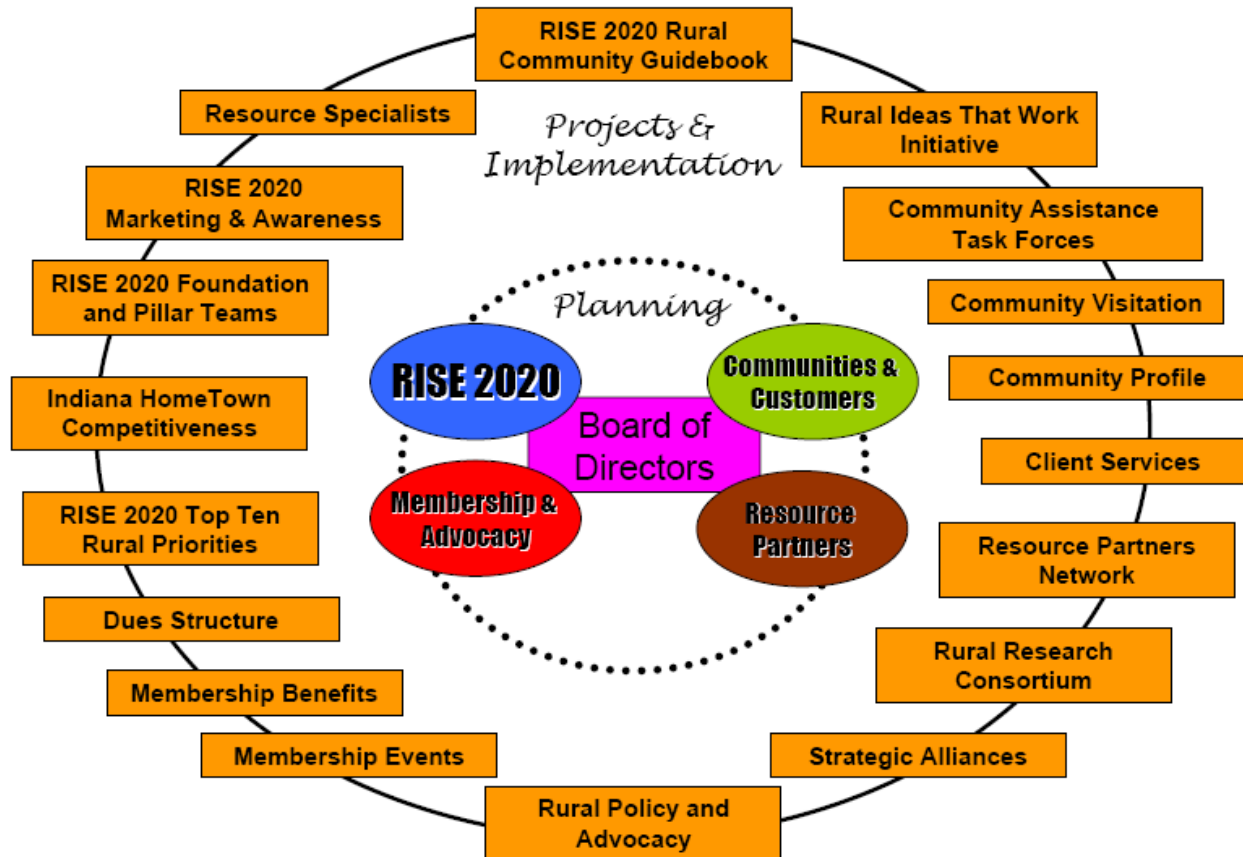
- Committee members are appointed by the respective Service Group Chair, ratified by the board
- Committee members serve from October 1 through September 30, IRDC's fiscal and programming year
- Committee members can be added at the discretion of the board
- Committee membership should represent the partnership sectors

# IRDC Inc. Tomorrow

Indiana Rural Development Council, Inc.



# GOVERNANCE – PLANNING – IMPLEMENTATION



## NEXT STEPS

- 1. Adopt four Service Groups proposals**
  - a. Implement projects through Service Groups
  - b. Convene Special Project Teams
    - i. RISE 2020 Rural Community Guidebook
    - ii. *Rural Ideas that Work* Initiative
  
- 2. Adopt board reorganization proposal**
  - a. Develop and propose bylaws changes
    - i. Rewrite
    - ii. Distribute
    - iii. Approve
    - iv. Guide the 2007 Election
  - b. Appoint and charge the Nominating Committee
    - i. Develop slate of officers and directors
    - ii. Present slate at Annual Business Meeting
  
- 3. Convene Finance/Funding Task Force**
  - a. Chaired by Jeff Quyle
  - b. Members appointed by IRDC, Inc. Chairman
  - c. Secure funding
  
- 4. Conduct an Annual Business Meeting and Election proposed for December 2007**
  - a. Appoint a Conference Committee
    - i. Identify meeting location
    - ii. Coordinate program
    - iii. Publicize event
  - b. Annual Business Meeting
    - i. Election
    - ii. Annual Report
  - c. Rural Champions Award
    - i. Appoint Selection Committee
    - ii. Contact recipient
    - iii. Prepare award
  
- 5. Develop Marketing and Communications Strategies**
  - a. Appoint Chair
  - b. Establish Committee
  - c. Support organization communications tools
  - d. Promote priority projects

**6. Prioritize the Work Plan**

- a. Convene the new board in January, 2008
- b. Establish project priorities
  - i. Desired outcomes
  - ii. Metrics
  - iii. Project timelines
  - iv. Funding needs
- c. Assign leadership and staff responsibilities